

CERTIFICATE OF LOCATION OF GOVERNMENT CORNER

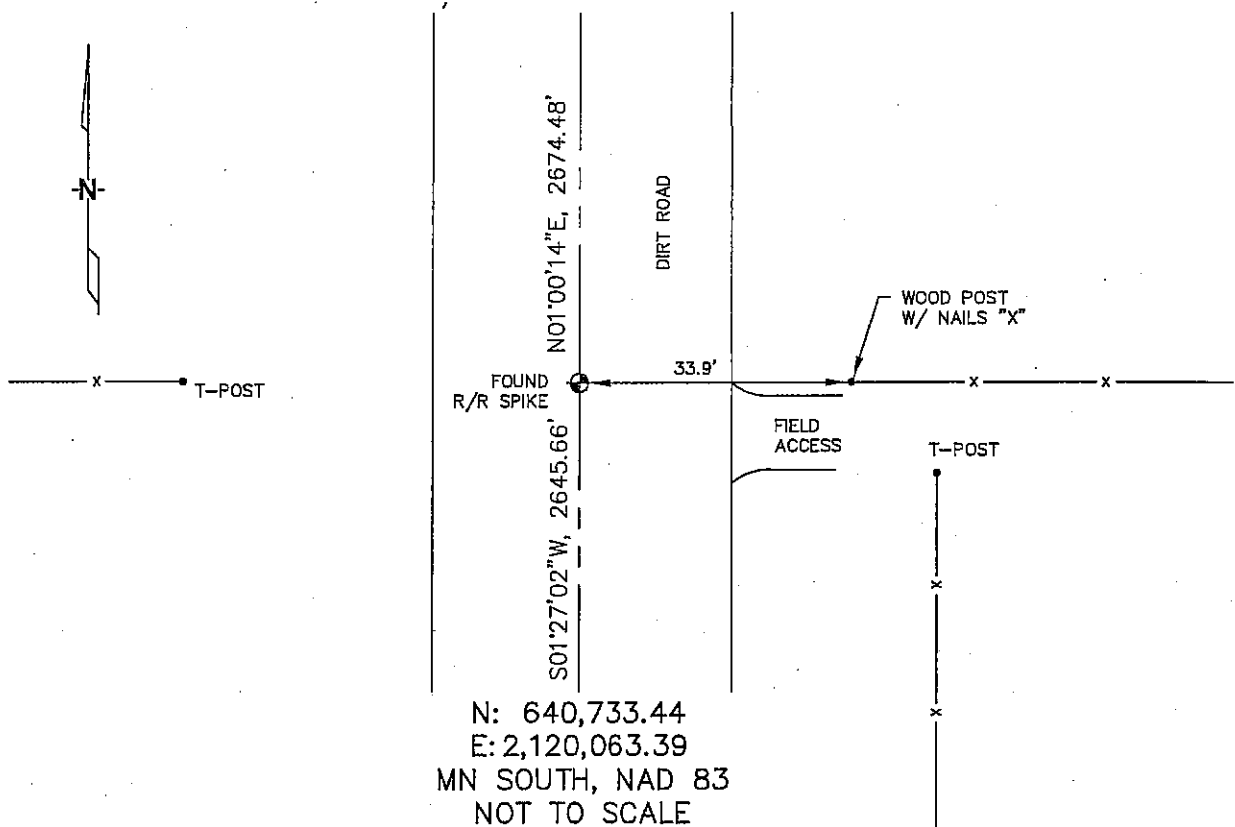
WEST 1/4 Corner of Section 5, Township 104, Range 42, 5TH P.M.

STATE OF MINNESOTA, County of NOBLES

At the corner location shown on the sketch :

- On _____ found _____
- left monument as found, lowered monument, removed monument (explain)
- On 2/22/2006 set SET A 5/8" REBAR IN C/L OF ROAD, OPPOSITE FENCE LINES RUNNING EAST & WEST.

Sketch of reference ties



Statement of evidence relative to this corner location is on back page

I hereby certify that this document and the data contained herein was prepared by me or under my direct supervision.

Thomas V. Zeff

 Thomas V. Zeff

7/6/06
 Date

Registration No. 44563

- Land Surveyor, Professional Engineer
- County Surveyor, County Engineer

OFFICE OF THE COUNTY RECORDER

County of _____

I hereby certify that this document was filed in the Co. Recorders office at _____ M. on the day of _____ A.D. , 20

County Recorder _____
 By _____, Deputy

DOCUMENT NO. _____

STATEMENT OF EVIDENCE:

WEST 1/4 CORNER, SECTION 5, T. 104 N., R. 42 W.,
NOBLES COUNTY, MINNESOTA

1868 Jewett & Howe, US. Deputy Surveyors, monumented corner.

1893 Nobles Co., found a stake on corner, no ties.

2/22/2006 Ulteig Engineers, Inc., Survey Crew, Brian Payne Party Chief, found a R/R spike in the C/L of the gravel road, opposite fence lines running east & west.

Ties: E-33.9' to nailed "X" on wood fence post;
N-2674.48' to NW corner, Section 5;
S-2645.66' to SW corner, Section 5.