

SW
SEC 33
104
43

COPY

Index A-9

CERTIFICATE OF LOCATION OF GOVERNMENT CORNER

NORTHEAST Corner of Section 5, Township 103N, Range 43W

5th Principal Meridian, State of Minnesota, County of Nobles.

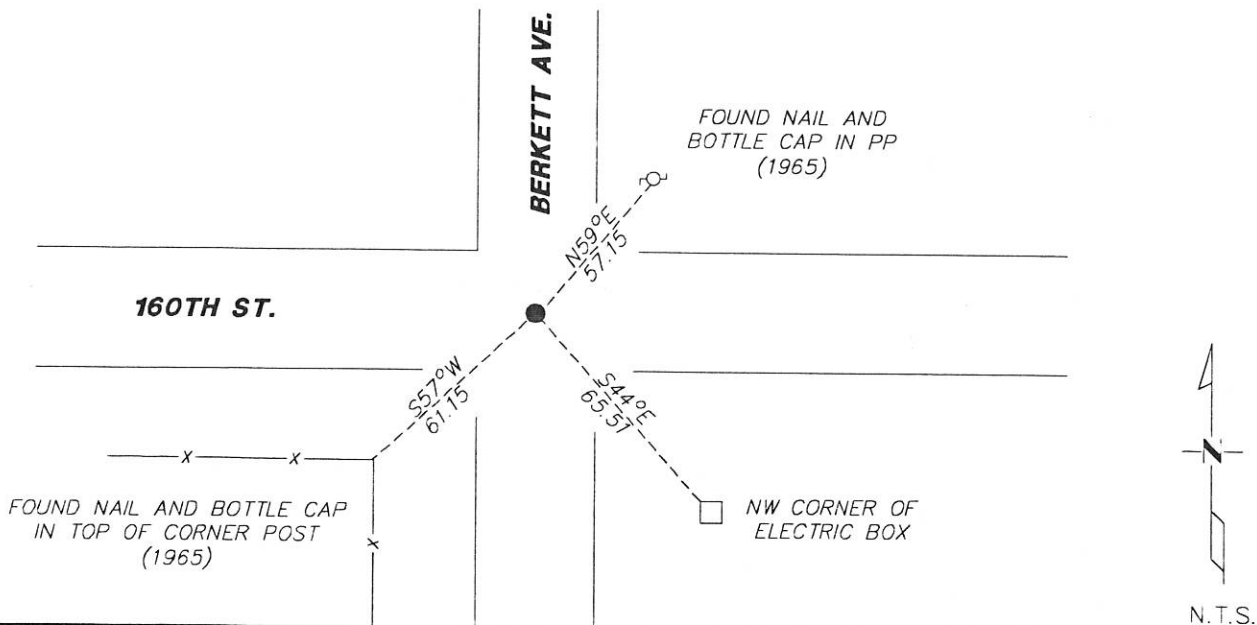
At the corner location shown on the sketch:

On 12/01/17 found a PK NAIL AT THE CENTERLINE INTERSECTION
DATE

left monument as found lowered monument removed monument (explain)

On _____ placed a _____
DATE

SKETCH OF REFERENCE TIES



Statement of evidence for this corner location is on back of this page.

I hereby certify that this document was researched and prepared by me or under my direct supervision and that I am a licensed Land Surveyor under the laws of the State of Minnesota.

Signature K. W. L.

Date 1/8/18 License No. 49563

Title:

- Land Surveyor Professional Engineer
- County Surveyor County Engineer

OFFICE OF THE COUNTY RECORDER

County of Nobles

I hereby certify that this document was filed in the Co.

Recorder's office at _____ M. on the _____ day of _____ A.D. 20____

County Recorder _____

by _____ Deputy

DOCUMENT NO. _____

KRIS WROOLIE
Minnesota License No. 49563

Statement of Evidence:

A-9

Northeast Corner of Section 5, Township 103 North, Range 43 West, 5th Principal Meridian, Nobles County, Minnesota.

1867-Deputy Surveyor set a post in mound with pits.

1929- Nobles County Highway Department "Corner Ties Book" calls for a stone to mark the corner location.

1954- Nobles County Highway Department "Corner Ties Book" calls for a placed stake to reestablish the corner location.

1965- Nobles County Highway Department "Corner Ties Book" calls for a placed iron pin to mark the corner location and set ties.

2017- Westwood Professional Services recovered a PK nail at the centerline intersection and two ties from 1965. This position agrees with long standing occupation and distances to adjacent section corners, accepting as the best available evidence of the corner. Ties were found or set as shown on the front of this certificate.

Analysis of the recovered data, field evidence and survey measurements, indicates that the monument found is the correct perpetuation of this corner. For additional information concerning this corner please contact Westwood Professional Services.

DOCUMENT NUMBER A 357409
Certified, Filed and or Recorded on
March 01, 2015 9:30 AM

Lynn Wilson

NOBLES COUNTY RECORDER
LYNN M. WILSON
507-295-5268