

SW  
sec 35  
104  
43

COPY

index A-17

### CERTIFICATE OF LOCATION OF GOVERNMENT CORNER

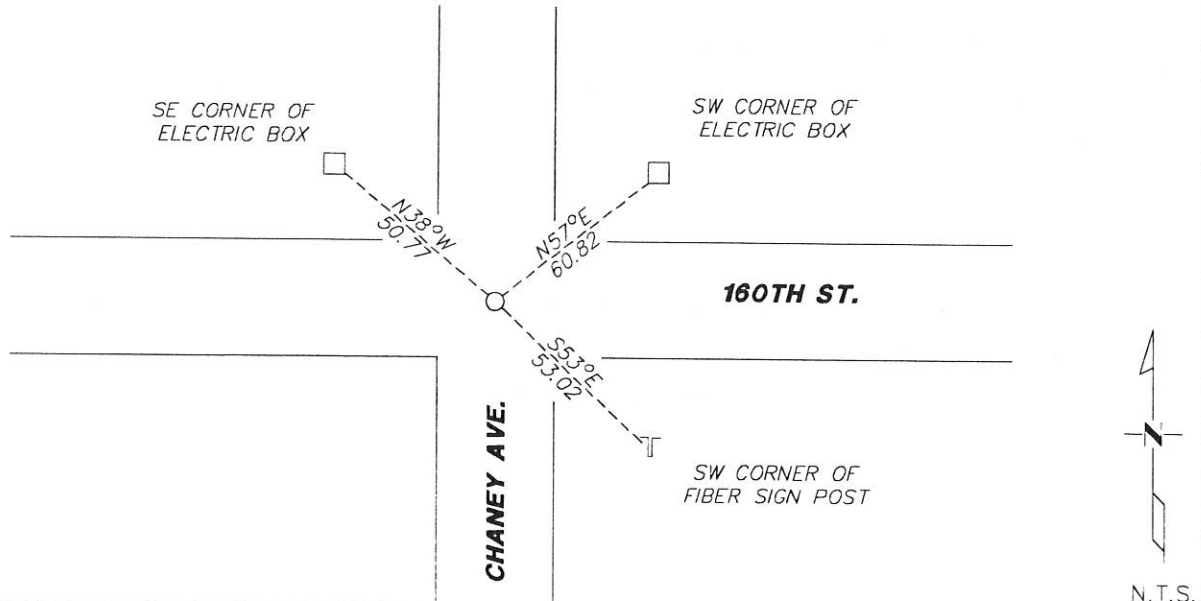
NORTHEAST \_\_\_\_\_ Corner of Section 3, Township 103N, Range 43W

5th Principal Meridian, State of Minnesota, County of Nobles.

At the corner location shown on the sketch:

- On \_\_\_\_\_ found a \_\_\_\_\_  
DATE
- left monument as found     lowered monument     removed monument (explain)
- On 12/28/17 placed a 1/2" REBAR CAPPED LS 49563 AT THE CENTERLINE INTERSECTION  
DATE

SKETCH OF REFERENCE TIES



N.T.S.

Statement of evidence for this corner location is on back of this page.

I hereby certify that this document was researched and prepared by me or under my direct supervision and that I am a licensed Land Surveyor under the laws of the State of Minnesota.

Signature [Handwritten Signature]

Date 1/8/18 License No. 49563

- Title:
- Land Surveyor     Professional Engineer
  - County Surveyor     County Engineer

OFFICE OF THE COUNTY RECORDER

County of Nobles

I hereby certify that this document was filed in the Co.

Recorder's office at \_\_\_\_\_ M. on the \_\_\_\_\_ day of \_\_\_\_\_ A.D. 20\_\_\_\_

County Recorder \_\_\_\_\_

by \_\_\_\_\_, Deputy

DOCUMENT NO. \_\_\_\_\_

KRIS WROOLIE  
Minnesota License No. 49563

**Statement of Evidence:**

A-17

Northeast Corner of Section 3, Township 103 North, Range 43 West, 5<sup>th</sup> Principal Meridian, Nobles County, Minnesota.

1867-Deputy Surveyor set a post in mound with pits.

1897- Nobles County Highway Department "Corner Ties Book" calls for a set stone to mark the corner location.

2017- Westwood Professional Services located an east/west/north/south centerline intersection. This position agrees with adjacent section corners and is accepted as the best available evidence of the corner. A ½' rebar capped LS 49563 was placed to mark the corner. Ties were found or set as shown on the front of this certificate.

Analysis of the recovered data, field evidence and survey measurements, indicates that the monument found is the correct perpetuation of this corner. For additional information concerning this corner please contact Westwood Professional Services.

DOCUMENT NUMBER A 377413  
Certified, Filed and Recorded on  
March 01, 2018 8:30 AM

*Lynn M. Wilson* RS

NOBLES COUNTY RECORDER  
LYNN M. WILSON  
507-295-5266