

SW
Sec 36
104
43

COPY

Index A-21

CERTIFICATE OF LOCATION OF GOVERNMENT CORNER

NORTHEAST Corner of Section 2, Township 103N, Range 43W

5th Principal Meridian, State of Minnesota, County of Nobles.

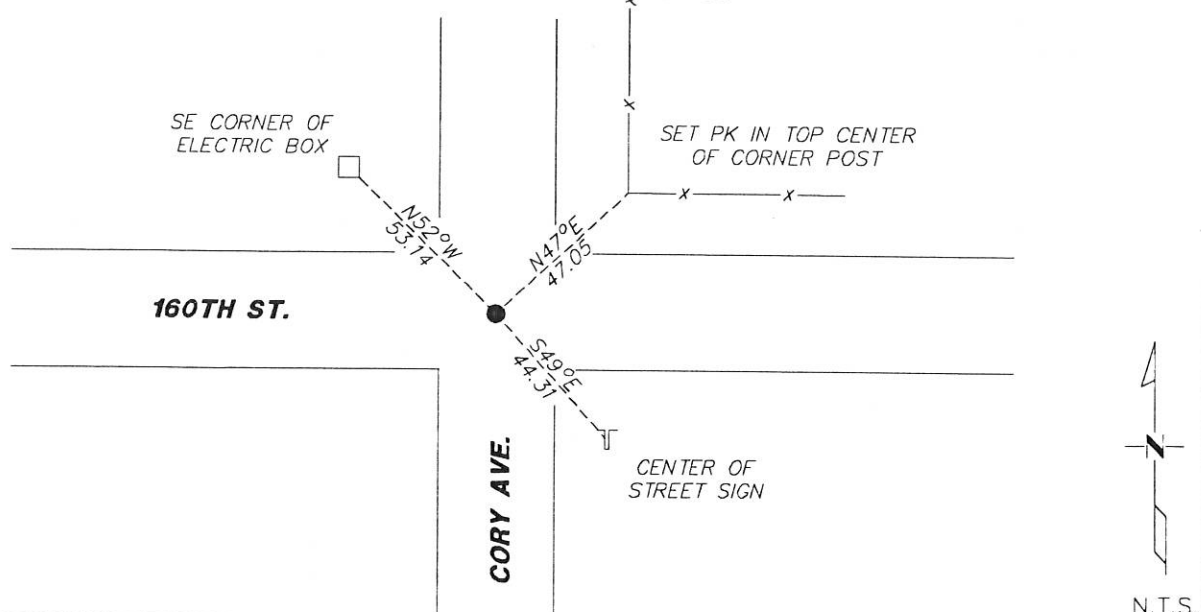
At the corner location shown on the sketch:

On 12/01/17 found a RAIL ROAD SPIKE AT THE CENTERLINE INTERSECTION
DATE

left monument as found lowered monument removed monument (explain)

On _____ placed a _____
DATE

SKETCH OF REFERENCE TIES



Statement of evidence for this corner location is on back of this page.

I hereby certify that this document was researched and prepared by me or under my direct supervision and that I am a licensed Land Surveyor under the laws of the State of Minnesota.

Signature *TJ Wilson*

Date 1/8/18 License No. 49563

Title:

- Land Surveyor Professional Engineer
- County Surveyor County Engineer

DOCUMENT NUMBER **357415**
Certified, Filed and recorded on
March 01, 2018 9:00 AM

Lynn Wilson **RS**

NOBLES COUNTY RECORDER
LYNN M. WILSON
507 288-6700

Statement of Evidence:

A-21

Northeast Corner of Section 2, Township 103 North, Range 43 West, 5th Principal Meridian, Nobles County, Minnesota.

1867-Deputy Surveyor set a post in mound with pits.

1892- Nobles County Highway Department "Corner Ties Book" calls for a stone to mark the corner location.

1917- Nobles County Highway Department "Corner Ties Book" calls for a stone to mark the corner location.

1945- Nobles County Highway Department "Corner Ties Book" calls for a placed wood stake to mark the corner location.

2008 - Ulteig Engineering found a 5/8" rebar down 0.8' at the centerline intersection, set ties, and file a Certificate of Location doc. No. 317869

2017- Westwood Professional Services recovered a railroad spike in the centerline intersection and 1 tie from the 2008 Certificate. Ties were found or set as shown on the front of this certificate.

Analysis of the recovered data, field evidence and survey measurements, indicates that the monument found is the correct perpetuation of this corner. For additional information concerning this corner please contact Westwood Professional Services.

3/1/21