

# CERTIFICATE OF LOCATION OF GOVERNMENT CORNER

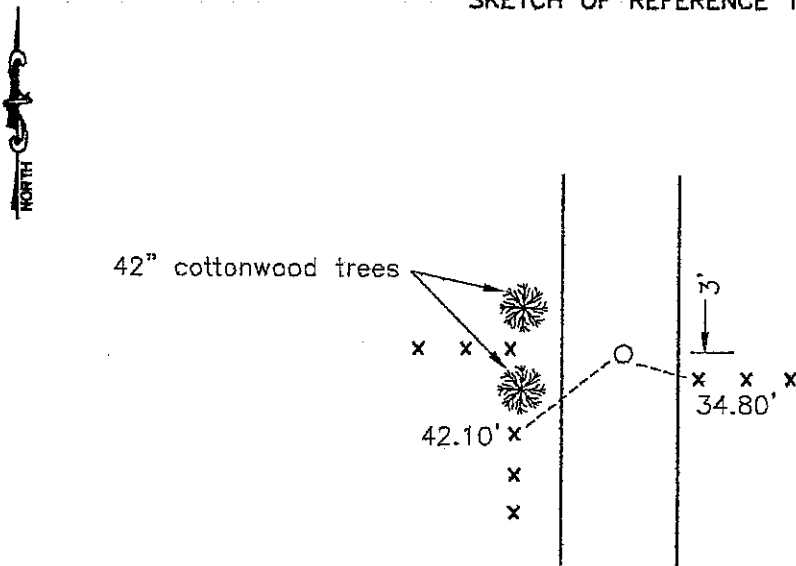
? ~~Northeast~~ EAST QTR. Corner of Section 10, Township 104, Range 43, 5th P.M.

STATE OF MINNESOTA, County of Nobles

At the corner location shown on the sketch:

- On June 3, 1996 found a large field stone with a rotted 1"x2" wooden stake  
DATE
- left monument as found,  lowered monument,  removed monument (explain)
- On June 3, 1996 placed a iron pipe next to stone and a 1" iron pipe w/seal at road  
DATE surface

### SKETCH OF REFERENCE TIES



P.K. nail and seal in top of end post - ESE 34.80'  
P.K. nail and seal in top of gate post - SW 42.10'

Statement of evidence relative to this corner location is on back of page.

I hereby certify that this document and the data contained herein was prepared by me or under my direct supervision.

Lyle C Moseng 3-24-98  
SIGNATURE DATE

Registration No. 11943

- Land Surveyor,  Professional Engineer
- County Surveyor,  County Engineer

OFFICE OF THE COUNTY RECORDER  
County of Nobles

I hereby certify that this document was filed in the Co. Recorders office at 11:35 A.M on the 25th day of March, A.D. 1998

County Recorder Jane Howard  
By \_\_\_\_\_, Deputy

DOCUMENT NO. 270666

TRACKED Q COMPARED dm  
PHOTO PPW  
FEE NR

Statement of Evidence